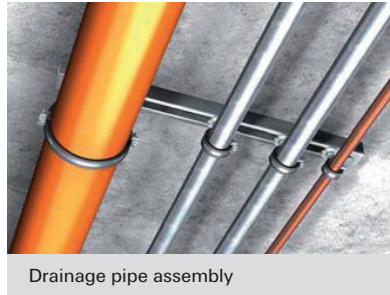


fischer Pipe Clamps FRSR



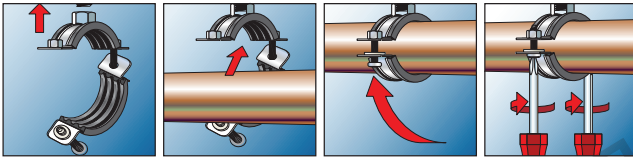
PROPERTIES

- **Material:** Steel
- **Zinc plating:** Electro zinc plated 5 - 9 μm
- **Standard:** comply with ASTM B633 SC1
Also available in SC3 on special request.
Also available in dacromate finish 8.6 mm for more detail check annex (B)
- **Connecting nut:** resistance welded, M8, SW 13
- **Locking screw:** flat head screw with combination recessed head
- **Sound Insulation inserts:**
Material EPDM: Chlorine fire, Silicon fire
- **Sound insulation:** acc. to DIN 4109
- **Temperature range:** -40 °C to +100 °C
- **Hardness:** 60 \pm 5° Shore

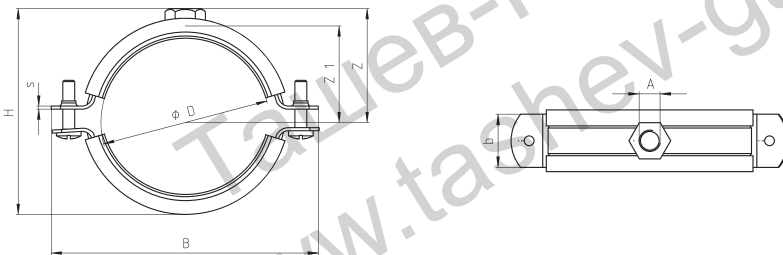
ADVANTAGES/BENEFITS

- Simple installation due to large opening angle.
- Locking screw secured against loss.
- Combination connecting thread for cost-effective warehousing and flexibility at the construction site.

INSTALLATION



TECHNICAL DATA



| Item | Art.-NO. | Qty. per box pcs. | Size (inch) | Clamping range D (mm) | s x b (mm) | Screw M | Thread diameter A (mm) | Recommended load N _{rec} (kN) | Design load N _d (kN) |
|-----------------------|----------|----------------------|----------------|-----------------------------|---------------|------------|------------------------------|--|---------------------------------------|
| FRSR 11-14 M8 / M10 | 534133 | 100 | 1/4" | 11-14 | 1.2 x 20 | M5 x 16 | M8+M10 | 0.85 | 1.19 |
| FRSR 15-19M8 / M10 | 534134 | 100 | 3/8" | 15-19 | 1.2 x 20 | M5 x 16 | M8+M10 | 0.85 | 1.19 |
| FRSR 20-25 M8 / M10 | 534135 | 100 | 1/2" | 20-25 | 1.2 x 20 | M5 x 16 | M8+M10 | 0.85 | 1.19 |
| FRSR 26-30 M8 / M10 | 534136 | 100 | 3/4" | 26-30 | 1.2 x 20 | M5 x 16 | M8+M10 | 0.85 | 1.19 |
| FRSR 32-36 M8 / M10 | 534137 | 100 | 1" | 32-36 | 1.2 x 20 | M5 x 16 | M8+M10 | 0.85 | 1.19 |
| FRSR 38-43 M8 / M10 | 534138 | 50 | 1-1/4" | 38-43 | 1.2 x 20 | M5 x 20 | M8+M10 | 0.85 | 1.19 |
| FRSR 47-51 M8 / M10 | 534139 | 50 | 1-1/2" | 47-51 | 1.2 x 20 | M5 x 20 | M8+M10 | 0.85 | 1.19 |
| FRSR 53-58 M8 / M10 | 534140 | 50 | - | 53-58 | 1.2 x 20 | M5 x 20 | M8+M10 | 0.85 | 1.19 |
| FRSR 60-64 M8 / M10 | 534141 | 50 | 2" | 60-64 | 1.2 x 20 | M5 x 20 | M8+M10 | 0.85 | 1.19 |
| FRSR 63-67 M8 / M10 | 534142 | 25 | 65 | 63-67 | 1.2 x 20 | M5 x 20 | M8+M10 | 0.85 | 1.19 |
| FRSR 68-72 M8 / M10 | 534143 | 25 | - | 68-72 | 1.5 x 20 | M6 x 20 | M8+M10 | 0.85 | 1.19 |
| FRSR 75-80 M8 / M10 | 534144 | 25 | 2-1/2" | 75-80 | 1.5 x 20 | M6 x 20 | M8+M10 | 0.85 | 1.19 |
| FRSR 81-86 M8 / M10 | 534145 | 25 | - | 81-86 | 1.5 x 20 | M6 x 20 | M8+M10 | 1.6 | 2.24 |
| FRSR 87-92 M8 / M10 | 534146 | 25 | 3" | 87-92 | 1.5 x 20 | M6 x 20 | M8+M10 | 1.6 | 2.24 |
| FRSR 99-105 M8 / M10 | 534147 | 20 | 3-1/2" | 99-105 | 2.0 x 20 | M6 x 20 | M8+M10 | 1.6 | 2.24 |
| FRSR 107-112 M8 / M10 | 534148 | 20 | - | 107-112 | 2.0 x 20 | M6 x 20 | M8+M10 | 1.6 | 2.24 |
| FRSR 113-118 M8 / M10 | 534149 | 10 | 4" | 113-118 | 2.0 x 20 | M6 x 20 | M8+M10 | 2.2 | 3.08 |
| FRSR 125-130 M8 / M10 | 534150 | 10 | - | 125-130 | 2.0 x 20 | M6 x 20 | M8+M10 | 2.2 | 3.08 |
| FRSR 138-142 M8 / M10 | 534151 | 10 | 5" | 138-142 | 2.0 x 20 | M6 x 20 | M8+M10 | 2.2 | 3.08 |
| FRSR 159-166 M8 / M10 | 534152 | 8 | 6" | 159-166 | 2.0 x 20 | M6 x 20 | M8+M10 | 2.2 | 3.08 |
| FRSR 200-212 M8 / M10 | 534153 | 8 | - | 200-212 | 2.0 x 20 | M6 x 20 | M8+M10 | 2.5 | 3.5 |
| FRSR 215-220 M8 / M10 | 534154 | 8 | 8" | 215-220 | 2.0 x 20 | M6 x 20 | M8+M10 | 2.5 | 3.5 |